

SCHEDULE 'A' to the COMPREHENSIVE ZONING BY-LAW for the TOWNSHIP OF LAURENTIAN VALLEY

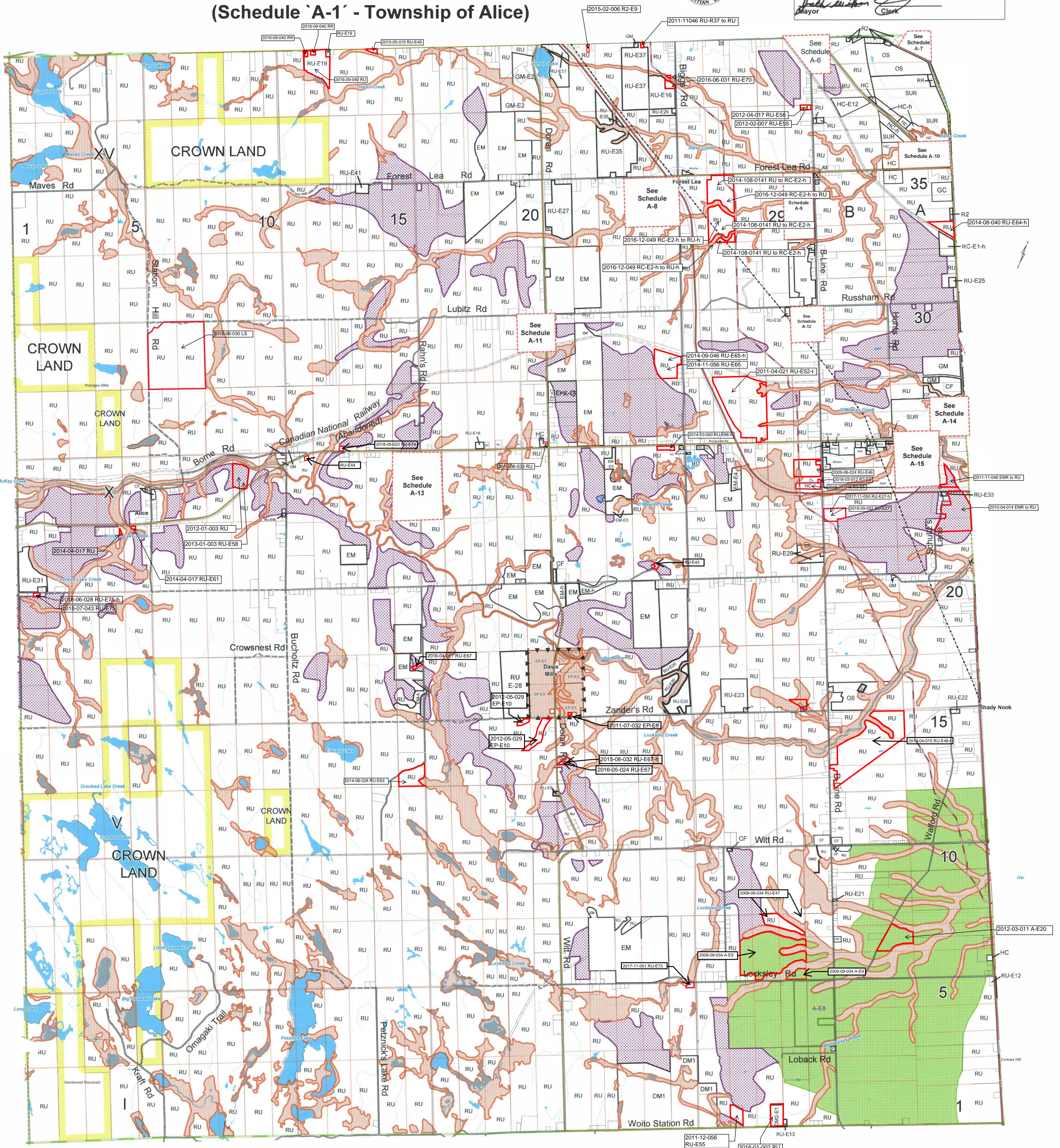
(Schedule 'A-1' - Township of Alice)



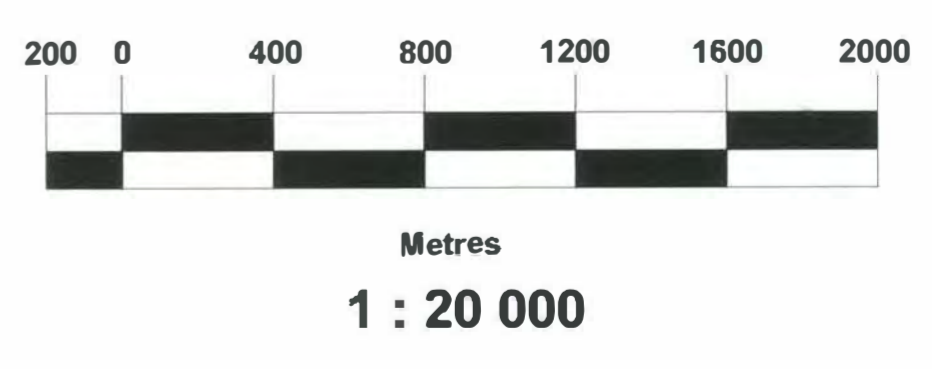
This is Schedule 'A-1' to the Comprehensive Zoning By-Law Passed the 9th day of April, 2008.

Signatures of the Signing Officers:

[Signature] Mayor
[Signature] Clerk



Map Consolidation
June 18, 2019



Jp2g Consultants Inc. GeoSolutions Consulting

Legend

AGRICULTURE (A)	PROVINCIAL HIGHWAY	GEOGRAPHIC TOWNSHIP	AC ADULT COMMERCIAL	LM LIGHT INDUSTRIAL	R2 RESIDENTIAL TWO
ENVIRONMENTAL PROTECTION (EP)	COUNTY ROAD	NATURAL GAS PIPELINE	ARP ARCHEOLOGICAL RESOURCE PROTECTION	HC HIGHWAY COMMERCIAL	R3 RESIDENTIAL THREE
EXTRACTIVE INDUSTRIAL RESERVE (EMR)	TOWNSHIP ROAD	HYDRO	CF COMMUNITY FACILITY	GC GENERAL COMMERCIAL	RC RECREATIONAL COMMERCIAL
CROWN LAND	SEASONAL, PRIVATE or CROWN ROAD	RURAL (RU)	DM1 DISPOSAL INDUSTRIAL ONE	SC SHOPPING CENTRE COMMERCIAL	SUR SUBURBAN RESERVE
HYDROGRAPHY	RAILWAY	NHF OVERLAY ZONE AREA OF NATURAL & SCIENTIFIC INTEREST (ANSI)	DM2 DISPOSAL INDUSTRIAL TWO	OS OPEN SPACE	TC TOURIST COMMERCIAL
	TOWNSHIP BORDER		EM EXTRACTIVE INDUSTRIAL	RR RURAL RESIDENTIAL	UR URBAN RESERVE
			GM GENERAL INDUSTRIAL	R1 RESIDENTIAL ONE	LSR LIMITED SERVICE RESIDENTIAL