

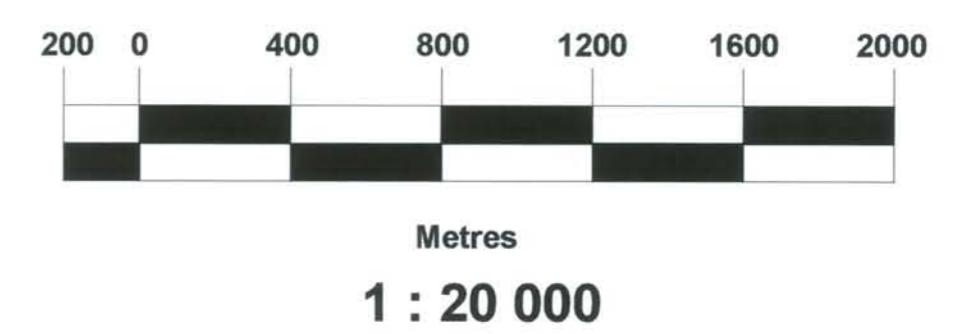
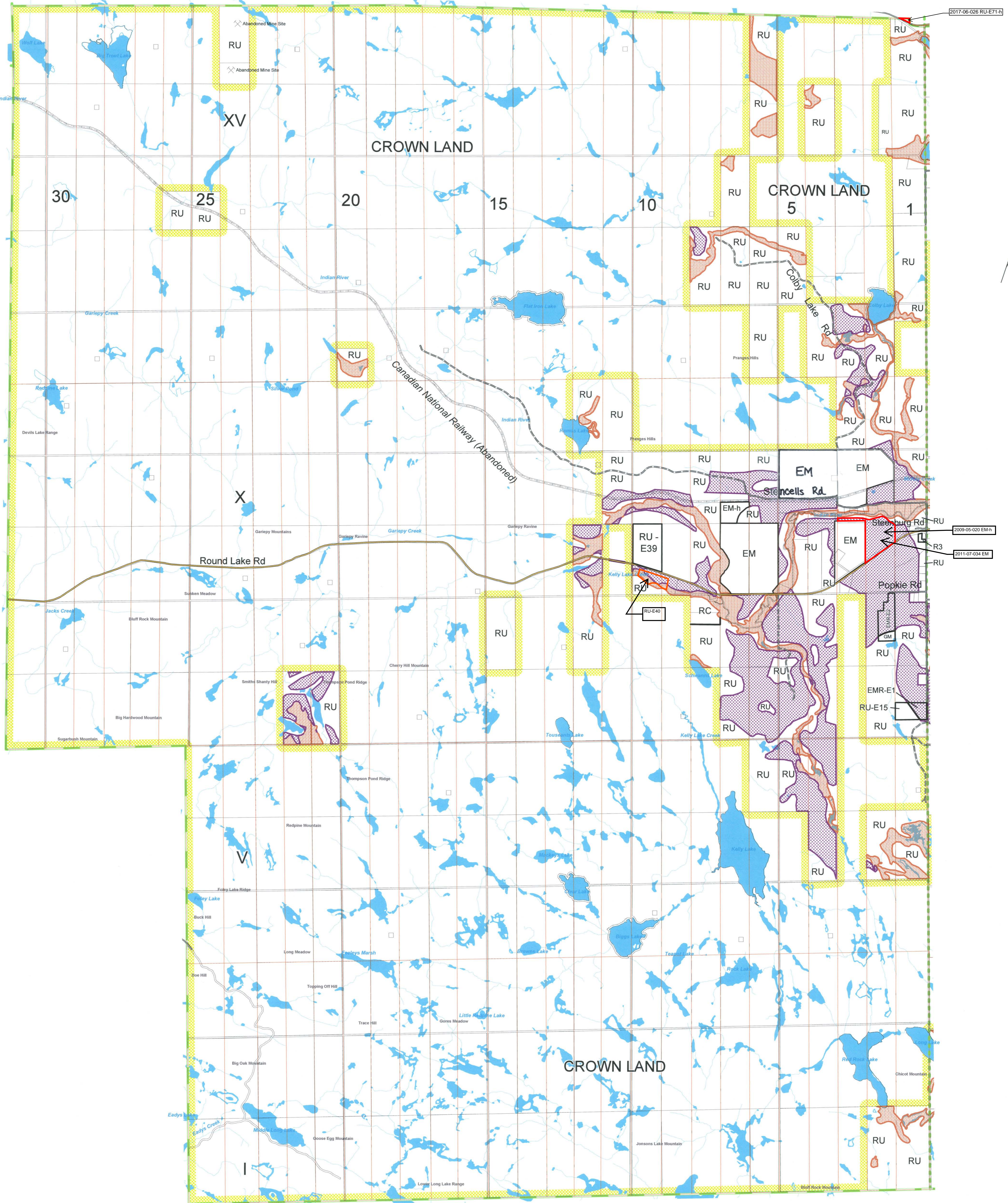
SCHEDULE 'A' to the COMPREHENSIVE ZONING BY-LAW for the TOWNSHIP OF LAURENTIAN VALLEY

(Schedule 'A-2' - Township of Fraser)



This is Schedule 'A-2' to the Comprehensive Zoning By-Law Passed the 9th day of April, 2008
 Signatures of the Signing Officers:

Jack Wilson Mayor
[Signature] Clerk



Map Consolidation
 June 20, 2017

DATE CONSOLIDATED: May 1

Jp2g Consultants Inc. GeoSolutions Consulting

Legend

	AGRICULTURE (A)		PROVINCIAL HIGHWAY		GEOGRAPHIC TOWNSHIP		RURAL (RU)		AC ADULT COMMERCIAL		LM LIGHT INDUSTRIAL		R2 RESIDENTIAL TWO
	ENVIRONMENTAL PROTECTION (EP)		COUNTY ROAD		NATURAL GAS PIPELINE		DM1 DISPOSAL INDUSTRIAL ONE		ARP ARCHEOLOGICAL RESOURCE PROTECTION		HC HIGHWAY COMMERCIAL		R3 RESIDENTIAL THREE
	EXTRACTIVE INDUSTRIAL RESERVE (EMR)		TOWNSHIP ROAD		HYDRO		DM2 DISPOSAL INDUSTRIAL TWO		CF COMMUNITY FACILITY		GC GENERAL COMMERCIAL		RC RECREATIONAL COMMERCIAL
	CROWN LAND		SEASONAL, PRIVATE or CROWN ROAD		NHF OVERLAY ZONE AREA OF NATURAL & SCIENTIFIC INTEREST (ANSI)		EM EXTRACTIVE INDUSTRIAL		DM1 DISPOSAL INDUSTRIAL ONE		SC SHOPPING CENTRE COMMERCIAL		SUR SUBURBAN RESERVE
	HYDROGRAPHY		RAILWAY		TOWNSHIP BORDER		GM GENERAL INDUSTRIAL		RR RURAL RESIDENTIAL		OS OPEN SPACE		TC TOURIST COMMERCIAL
									R1 RESIDENTIAL ONE				UR URBAN RESERVE
													LSR LIMITED SERVICE RESIDENTIAL