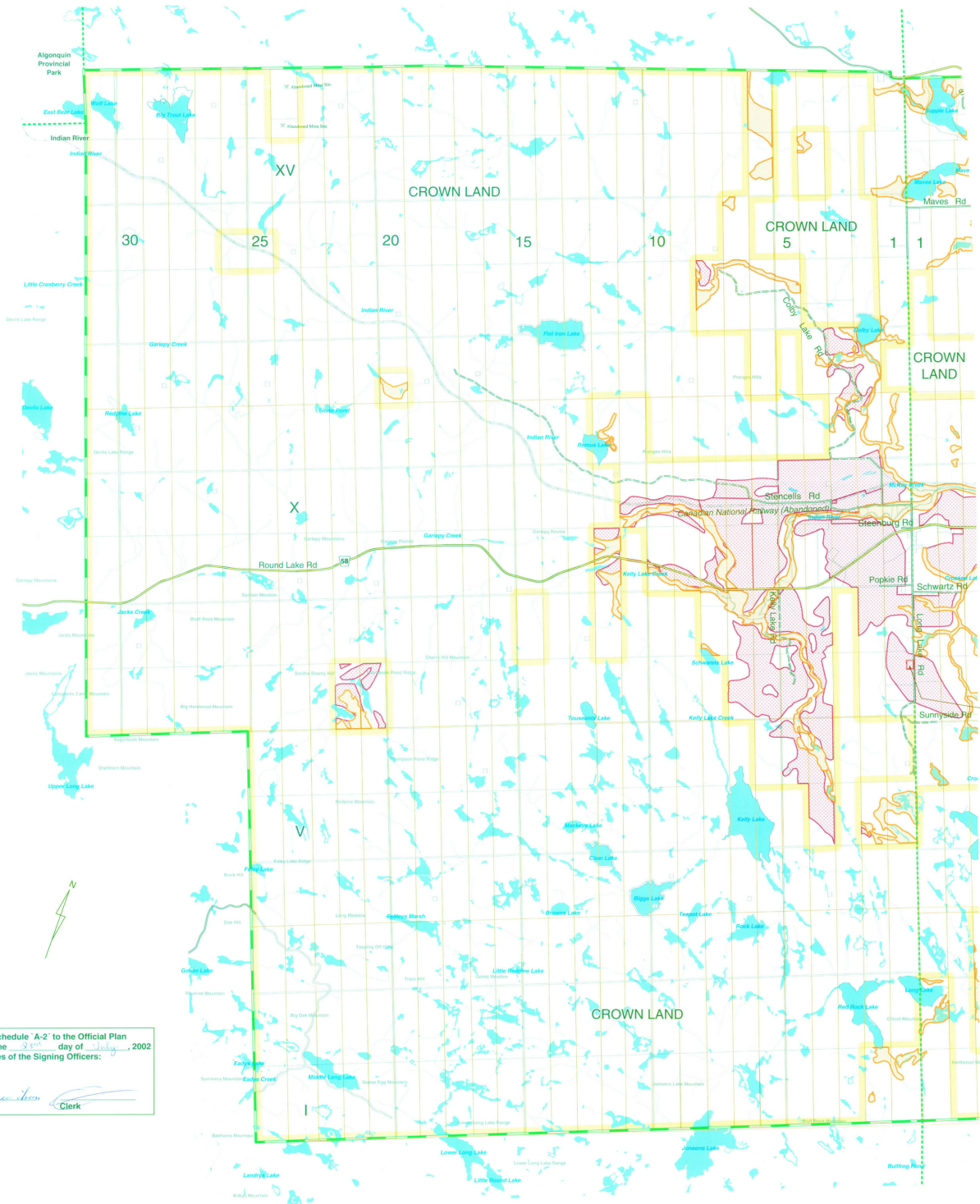


# SCHEDULE `A` to the OFFICIAL PLAN for the TOWNSHIP OF LAURENTIAN VALLEY

(Schedule `A-2` - Township of Fraser)



Modification (L) No. Under Section 110 of the Planning Act

This is Schedule `A-2` to the Official Plan Passed the 31<sup>st</sup> day of July, 2002  
 Signatures of the Signing Officers:  
 [Signature] Reeve [Signature] Clerk

Legend			
	AGRICULTURE		RESIDENTIAL
	SUBURBAN		HYDROGRAPHY
	COMMERCIAL		CROWN LAND
	WASTE DISPOSAL		RURAL
	MINERAL AGGREGATE RESOURCE		INDUSTRIAL
	ENVIRONMENTAL PROTECTION		SHOPPING CENTRE COMMERCIAL
	ENVIRONMENTAL PROTECTION - EXCEPTION ONE		SHOPPING CENTRE COMMERCIAL - Area One
	COMMUNITY FACILITY		COMMUNITY FACILITY
	PROVINCIAL HIGHWAY		COUNTY ROAD
	TOWNSHIP ROAD		SEASONAL, PRIVATE or CROWN ROAD
	RAILWAY		TOWNSHIP BORDER
	GEOGRAPHIC TOWNSHIP BORDER		

Data Source: County of Reeve, Ministry of Natural Resources, SP20 Consultants Inc., GeoSolutions Consulting Inc.

