

SCHEDULE 'A' to the COMPREHENSIVE ZONING BY-LAW for the TOWNSHIP OF LAURENTIAN VALLEY

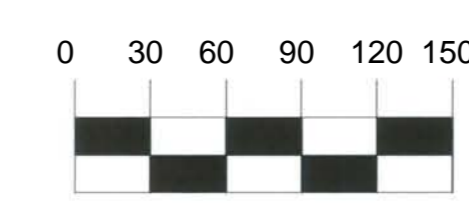
(Schedule 'A-5' - Stafford Village)



This is Schedule 'A-5' to the Comprehensive Zoning By-Law Passed the 9th day of April, 2008. Signatures of the Signing Officers:

Paul Wilson Mayor *[Signature]* Clerk

Map Consolidation:
January 19, 2021



1 : 300

Jp2g Consultants Inc. GeoSolutions Consulting

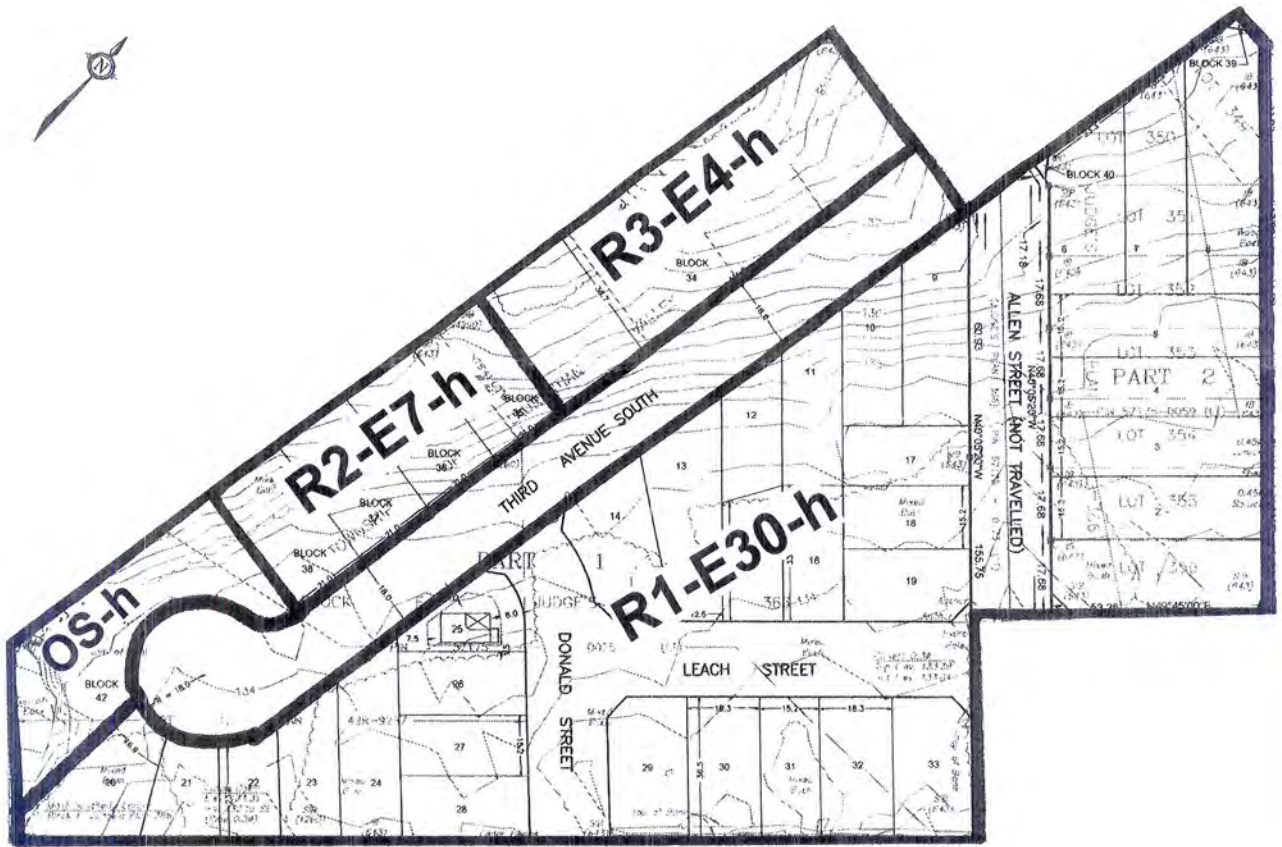
Legend

	AGRICULTURE (A)		PROVINCIAL HIGHWAY		GEOGRAPHIC TOWNSHIP		ADULT COMMERCIAL		GENERAL INDUSTRIAL		RESIDENTIAL TWO
	ENVIRONMENTAL PROTECTION (EP)		COUNTY ROAD		NATURAL GAS PIPELINE		ARCHEOLOGICAL RESOURCE PROTECTION		HIGHWAY COMMERCIAL		RESIDENTIAL THREE
	EXTRACTIVE INDUSTRIAL RESERVE (EMR)		TOWNSHIP ROAD		HYDRO		COMMUNITY FACILITY		LIGHT INDUSTRIAL		RECREATIONAL COMMERCIAL
	CROWN LAND		SEASONAL, PRIVATE or CROWN ROAD		RURAL (RU)		DISPOSAL INDUSTRIAL ONE		LIMITED SERVICE RESIDENTIAL		SUBURBAN RESERVE
	HYDROGRAPHY		RAILWAY		NHF PROVINCIAL SIGNIFICANT WETLAND (PSW)		DISPOSAL INDUSTRIAL TWO		OPEN SPACE		TOURIST COMMERCIAL
			TOWNSHIP BORDER		120 m BUFFER FROM PSW		GENERAL COMMERCIAL		RURAL RESIDENTIAL		URBAN RESERVE

Data Sources: County of Renfrew, Ministry of Natural Resources, Jp2g Consultants Inc., GeoSolutions Consulting Inc.

REVISED: FEBRUARY 20, 2008

Geographic Township of Stafford



Scale



Legend

- R1-E30-h** Residential One-Exception Thirty- holding
- R2-E7-h** Residential Two-Exception Seven-holding
- R3-E4-h** Residential Three - Exception Four - holding
- OS** Open Space
- h** holding zone (principle of development established)

This is Schedule "A-21" to the Township of Laurentian Valley Zoning By-law Number 08-04-391, as amended.

CORPORATION OF THE TOWNSHIP OF LAURENTIAN VALLEY

This is Schedule "B" to By-law Number 2014-07-005
 Passed the 19th day of February, 2014

Signatures of Signing Officers:

[Signature]
 Mayor

[Signature]
 Chief Administrative Officer/Clerk