

LARGE ITEM COLLECTION

- Collection occurs on **your collection day** during the week specified on your collection schedule. Items are to be placed curbside no earlier than Sunday of Large Item Collection Week (May 27th & September 9th).
- Scrap metal & Non-Freon appliances, Freon appliances and Electronics **must be placed in separate piles** as they are collected separately for recycling.
- Small items or material placed out in garbage bags or cardboard boxes WILL NOT BE collected.**
- Remove all fluids, gasoline and batteries from items (i.e. lawn mower).
- Material must be manageable by two (2) people and cannot exceed 80 lbs (36kg), 27ft³ (.76m³) or 6 ft (1.8 m).

ACCEPTABLE LARGE HOUSEHOLD ITEMS

Material must be sorted into **4 separate piles**: Scrap Metal & Non-Freon Metal Appliances, Freon Appliances, Acceptable Large Household Items, Electronic Waste:

- Scrap Metal & Non-Freon Metal Appliances (Separate Pile)**
 - BBQ's, stainless steel sinks, bikes, exercise equipment, microwave
 - Non-Freon Appliances: oven, washer, dryer, dishwasher
 - Small metal appliances (iron, kettle, toaster) should be placed in your yellow bin (remove and discard cords in garbage.)
- Freon Appliances (Separate Pile)**
 - Fridge, freezers, air conditioners, water coolers, dehumidifiers. **Freon does not have to be removed. Remove lids & doors from fridges/freezers**
- Acceptable Large Items (Separate Pile)**
 - Artificial Christmas Tree (Remove from cardboard box)
 - Boxspring/mattresses
 - Broken garbage cans, plastic totes, etc. **MUST BE LABELED "FOR COLLECTION"**
 - Carpets & underlay
 - Furniture (desks, couches)
 - Plastic - large, bulky household plastic items (children's swimming pool, lawn chair, outdoor toys)
 - Pool covers
 - Luggage & hockey bags larger than 9" x 14" x 22"
 - Mops, brooms, shovels & rakes (non-metal)
- Electronic Waste (Separate Pile)**
 - TV's
 - Computers
 - Radios
 - Speakers

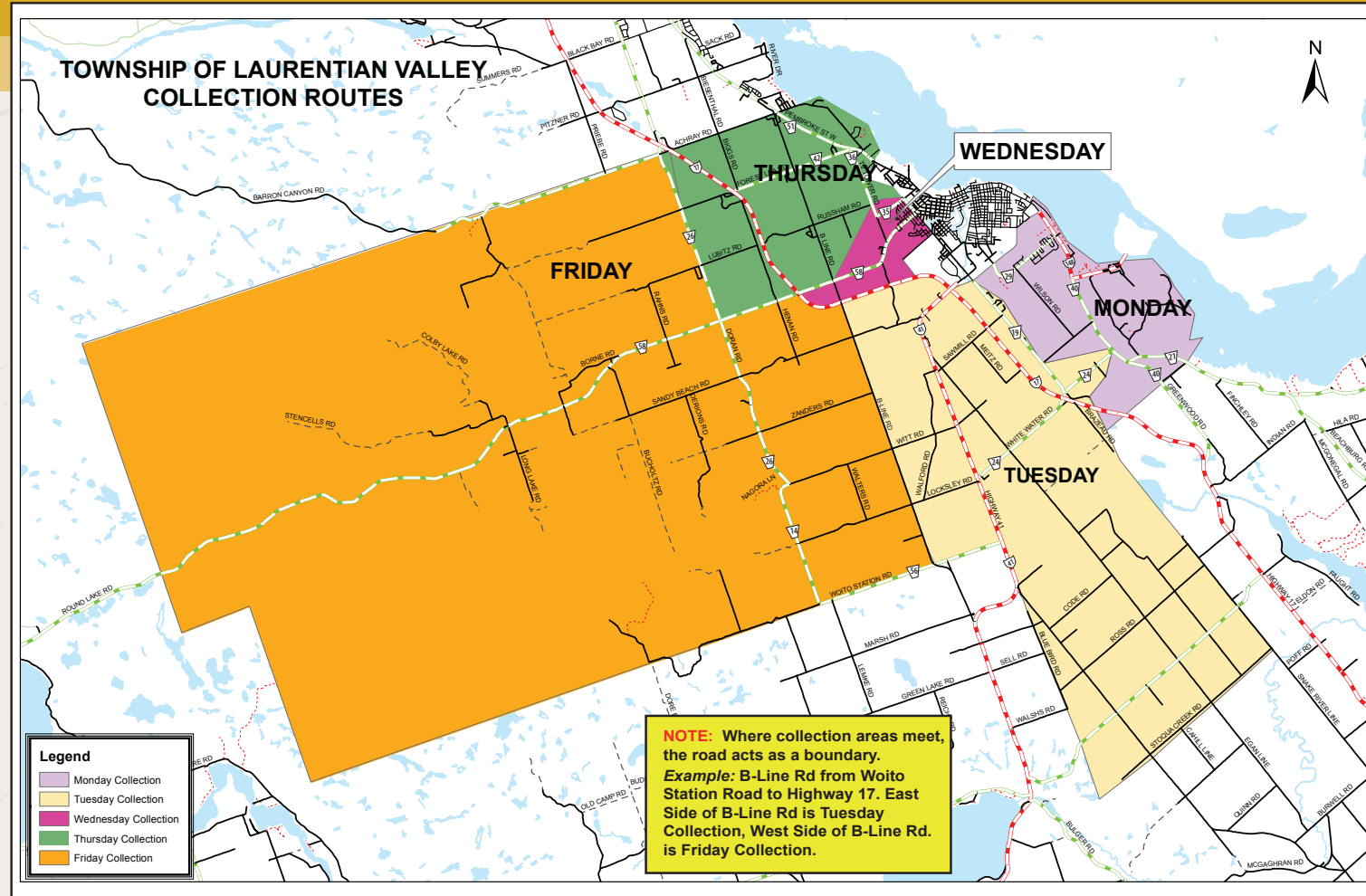
NON-ACCEPTABLE ITEMS - Must be brought to OVWRC (tipping fees may apply)

- Construction/ Renovation Material**
- Bathtubs, toilets, vanities, cupboards, countertops, sinks (non-metal)**
- Concrete**
- Drywall**
- Flooring**
- Vinyl siding, shingles**
- Windows & doors**
- Wood (Lumber, plywood, etc.)**
- Wood pallets**
- Propane tanks**
- Plastic flower pots & trays**
- Hazardous waste**
- Glass table tops** (broken glass is acceptable tightly wrapped in a cardboard box or in a rigid reusable container, clearly labeled broken glass and set out for regular garbage collection)
- Tires**
- Clothing & textiles**
- Bagged garbage**
- Cardboard boxes**
- Items smaller than 9" x 14" x 22" or items that can fit into a standard garbage bag or can**

Did you know some of these items may be suitable for Reuse? Check out OVWRC's Reuse Centre. Visit www.ovwrc.com for more information.

Collection Schedule 2024/2025

Please refer to the map for your collection day



COLLECTION INQUIRIES & MISSED COLLECTION

Contact the Collection Contractor:
Miller Waste Systems Inc. 613-735-6925

Purchase of Blue Boxes/Yellow Bins/Nets

Contact the Municipal Office
613-735-6291
info@lvtownship.ca

OTTAWA VALLEY WASTE RECOVERY CENTRE OPERATING HOURS

(Including the Hazardous Waste, Electronic Waste Depot & Reuse Centre. Hours subject to change)
April 1st to October 31st: Monday to Friday 7 a.m. to 5 p.m., Saturday 8 a.m. to 4 p.m.
November 1st to March 31st: Monday to Friday 7:30 a.m. to 4 p.m., Saturday 9 a.m. to 1 p.m.

CLOSED Sundays
Secure loads during transport to OVWRC to prevent roadside litter

INFORMATION ON ACCEPTABLE ITEMS

www.ovwrc.com | info@ovwrc.com | 613-735-7537
900 Woito Station Rd., Laurentian Valley, ON K8A 6W5

LITTER PROBLEMS? We Have You Covered! Nets for sale at your Municipal office or OVWRC.

FIND OUT WHAT GOES WHERE! Search 100's of items using the online tool at www.ovwrc.com/what-goes-where



TOWNSHIP OF LAURENTIAN VALLEY Collection Schedule 2024/2025

If you require an alternate format or communication supports for this document, please contact the Municipal Office at 613-735-6291 or info@lvtownship.ca

Please refer to the map for your collection day. Turn calendar over for next 6 months

APRIL 2024						
SUNDAY	MONDAY	TUESDAY	WEDNESDAY	THURSDAY	FRIDAY	SATURDAY
Collection moves ahead one day due to holiday	1 Easter Monday	2	3	4	5	6
7	8	9	10	11	12	13
14	15	16	17	18	19	20
21	22	23	24	25	26	27
28	29	30	All types of plastic bags and Styrofoam are NOT accepted in recycling. Place in regular garbage.			

JUNE 2024						
SUNDAY	MONDAY	TUESDAY	WEDNESDAY	THURSDAY	FRIDAY	SATURDAY
Weekly green cart collection June to September. OVWRC turns your food waste into compost! Do not place plastics of any kind, metal, glass or Styrofoam in your green cart.						1 e Pembroke
2	3	4	5	6	7	8
9	10	11	12	13	14	15
16	17	18	19	20	21	22
23	24	25	26	27	28	29
30						

AUGUST 2024						
SUNDAY	MONDAY	TUESDAY	WEDNESDAY	THURSDAY	FRIDAY	SATURDAY
Lids and/or nets are acceptable on recycling containers to help prevent wind-blown litter. Nets can be purchased at the Township of Laurentian Valley office or OVWRC.						
4 Collection moves ahead one day due to holiday	5 Civic Holiday	6	7	8	9	10
11	12	13	14	15	16	17
18	19	20	21	22	23	24
25	26	27	28	29	30	31

MAY 2024						
SUNDAY	MONDAY	TUESDAY	WEDNESDAY	THURSDAY	FRIDAY	SATURDAY
Large Item Collection - Week of May 27th. Collection is on your regular collection day. Items are to be placed curbside no earlier than Sunday, May 26th. RESIDENTIAL PROPERTIES ONLY.						
5	6	7	8	9	10	11 Petawawa
12	13	14	15	16	17	18
19 Collection moves ahead one day due to holiday	20 Victoria Day	21	22	23	24	25
26 Large items may be placed curbside	27	28	29	30	31	

JULY 2024						
SUNDAY	MONDAY	TUESDAY	WEDNESDAY	THURSDAY	FRIDAY	SATURDAY
Collection moves ahead one day due to holiday						
1	2 Canada Day	3	4	5	6	7
14	15	16	17	18	19	20
21	22	23	24	25	26	27
28	29	30	31			

SEPTEMBER 2024						
SUNDAY	MONDAY	TUESDAY	WEDNESDAY	THURSDAY	FRIDAY	SATURDAY
Large Item Collection - Week of September 9th. Collection occurs on your regular collection day. Items are to be placed curbside no earlier than Sunday, September 8th. RESIDENTIAL PROPERTIES ONLY.						
1 Collection moves ahead one day due to holiday	2 Labour Day	3	4	5	6	7
8 Large items may be placed curbside	9	10	11	12	13	14
15	16	17	18	19	20	21
22	23	24	25	26	27	28
29	30					

All waste streams to be set-out by 6:30 a.m. for collection. Material must be placed 5 to 6 feet (1.5 to 1.8 m) from curb or roadside (in driveway, not on sidewalk or snow bank). Green cart must have 2 to 3 feet (0.6 to 0.9 m) clearance around it to allow for proper collection and with wheels facing away from the road with the lid closed. Containers cannot exceed 50 lbs (23kg) (with the exception of the green cart).



For a list of acceptable items please refer to the guide included with this calendar or visit www.ovwrc.com/what-goes-where
Questions? Contact OVWRC 613-735-7537 or info@ovwrc.com.

COLLECTION INQUIRIES & MISSED COLLECTION

Contact the Collection Contractor: Miller Waste Systems Inc. 613-735-6925
Contact the Municipal Office: Purchase of Blue Boxes/Yellow Bins/Nets
613-735-6291 info@lvtownship.ca

Electronic Waste (E-Waste) & Hazardous or Special Waste (HSW)

Accepted year round at the Ottawa Valley Waste Recovery Centre during regular operating hours OR at an Environmental Day (NO CHARGE)

ENVIRONMENTAL DAYS (FOR DROP-OFF OF E-WASTE, HSW)

8:00 am to 2:00 pm
May 11th Petawawa Civic Centre
June 1st Pembroke & Area Community Centre (Pem Ice 2)
(enter off Boundary Rd.)
Date, location and events subject to change.

TIRES

Tires are NOT accepted at Environmental Days and are NOT collected curbside. Tires (passenger & light truck tires, NO rims, 10 tires/day/customer) can be dropped off at OVWRC, no charge.

HSW MATERIAL ACCEPTED (Containers 5 gallon (20L) or smaller)

Ensure HSW is in the original or a well-marked container to indicate the contents. Containers must be properly sealed with no visible leaks. Unlabeled/unidentified products cannot be accepted.

Batteries
Helium tanks (single use)
Mercury thermometers & switches
Needles, syringes, lancets (packaged in a sealed plastic container or sharps container OR return to local pharmacy)
Oil, oil filters & empty oil containers
Paints
Propane cylinders
Pesticides & herbicides

Small businesses must receive pre-approval before bringing HSW - visit ovwrc.com to download application forms.



DO NOT throw these items in garbage or recycling.

E-WASTE ACCEPTED (RESIDENTS & BUSINESSES)

Answering machines
Cameras
CD/DVD players & drives
Cell phones
Computers & laptops
Electrical instruments (i.e. electric guitar)
Keyboards & mice
Monitors
Print cartridges
Radios/Stereos
Telephones
TVs/VCRs
Video game devices & consoles

E-Waste Accepted Curbside During Large Item Collection

Due to Health & Safety concerns, OVWRC staff are not able to assist with unloading of material from customer vehicles

FIND OUT WHAT GOES WHERE!
Search 100's of items using the online tool at www.ovwrc.com/what-goes-where





TOWNSHIP OF LAURENTIAN VALLEY

Collection Schedule 2024/2025

If you require an alternate format or communication supports for this document, please contact the Municipal Office at 613-735-6291 or info@lvtownship.ca

Please refer to the map for your collection day.

OCTOBER 2024						
SUNDAY	MONDAY	TUESDAY	WEDNESDAY	THURSDAY	FRIDAY	SATURDAY
Leaves & Grass Clippings (loose or in paper bags) accepted at OVWRC - No charge. Fees apply for Branches, Tree Limbs and Stumps	1	2	3	4	5	
6	7	8	9	10	11	12
13 Collection moves ahead one day due to holiday	14 Thanksgiving	15	16	17	18	19
20	21	22	23	24	25	26
27	28	29	30	31		

NOVEMBER 2024						
SUNDAY	MONDAY	TUESDAY	WEDNESDAY	THURSDAY	FRIDAY	SATURDAY
Containers & bins must be placed 5 to 6 feet (1.5 to 1.8 m) from curb or roadside (in driveway, not on sidewalk or snow bank)						
3	4	5	6	7	8	9
10	11	12	13	14	15	16
17	18	19	20	21	22	23
24	25	26	27	28	29	30

DECEMBER 2024						
SUNDAY	MONDAY	TUESDAY	WEDNESDAY	THURSDAY	FRIDAY	SATURDAY
1	2	3	4	5	6	7
8	9	10	11	12	13	14
15	16	17	18	19	20	21
22 Collection moves ahead one day due to holiday	23	24	25 Christmas Day	26 Boxing Day	27	28
29	30	31	Hazardous and Electronic Waste accepted at OVWRC year round!			

JANUARY 2025						
SUNDAY	MONDAY	TUESDAY	WEDNESDAY	THURSDAY	FRIDAY	SATURDAY
Collection moves ahead one day due to holiday. Christmas Tree collection - week of January 6th on your regular collection day. Natural Trees only. Trees wrapped in plastic WILL NOT be collected.						
5	6 New Year's Day	7	8	9	10	11
12	13	14	15	16	17	18
19	20	21	22	23	24	25
26	27	28	29	30	31	

FEBRUARY 2025						
SUNDAY	MONDAY	TUESDAY	WEDNESDAY	THURSDAY	FRIDAY	SATURDAY
						1
2	3	4	5	6	7	8
9	10	11	12	13	14	15
16 Collection moves ahead one day due to holiday	17 Family Day	18	19	20	21	22
23	24	25	26	27	28	29

MARCH 2025						
SUNDAY	MONDAY	TUESDAY	WEDNESDAY	THURSDAY	FRIDAY	SATURDAY
2025/2026 Schedules delivered mid-March						
2	3	4	5	6	7	8
9	10	11	12	13	14	15
16	17	18	19	20	21	22
23	24	25	26	27	28	29
30	31					

All waste streams to be set-out by 6:30 a.m. for collection. Material must be placed 5 to 6 feet (1.5 to 1.8 m) from curb or roadside (in driveway, not on sidewalk or snow bank). Green cart must have 2 to 3 feet (0.6 to 0.9 m) clearance around it to allow for proper collection and with wheels facing away from the road with the lid closed. Containers cannot exceed 50 lbs (23kg) (with the exception of the green cart).

COLLECTION INQUIRIES & MISSED COLLECTION

Contact the Collection Contractor: Miller Waste Systems Inc. 613-735-6925
 Contact the Municipal Office: Purchase of Blue Boxes/Yellow Bins/Nets
 613-735-6291 info@lvtownship.ca



For a list of acceptable items please refer to the guide included with this calendar or visit www.ovwrc.com/what-goes-where
 Questions? Contact OVWRC 613-735-7537 or info@ovwrc.com.

Recyclables must be placed loose inside your yellow bin or other open top, reusable container (i.e. laundry basket, Rubbermaid container, etc.)

Residential recycling in plastic bags WILL NOT be collected.

RECYCLABLES MUST BE EMPTY AND RINSED

Return all eligible liquor, wine, beer containers to the Beer Store for a refund.



DO NOT PUT IN RECYCLING

- Containers filled with liquid
- Home health care waste
- Sharps & needles (dispose of at your local pharmacy)
- Sharp items such as knives
- Batteries
- Plastic bags & Styrofoam (all types)
- Propane tanks
- Black plastic



This side for Containers

YELLOW BIN (Containers)

3 BAG/CONTAINER LIMIT PER HOUSEHOLD. Garbage can be set out in plastic bags or garbage cans.



- Aluminum foil
- Ashes (once cooled, place in a combustible container - i.e. box, bag)
- Black plastic
- Cigarette butts (properly extinguished)
- Dishes/ceramics
- Disposable mop/dust sheets
- Feminine hygiene products
- Garden hose & clothesline
- Mirrors/glass (broken glass is acceptable tightly wrapped in a cardboard box or in a rigid reusable container, clearly labeled broken glass and set out for regular garbage collection)
- Pet waste/cat litter
- Photographs
- Pool noodles
- Smoke/Carbon Monoxide alarms (Remove batteries for hazardous waste disposal)
- Straws & plastic lids from hot/cold drink cups
- Styrofoam packing peanuts
- Vacuum bags

DO NOT PUT IN GARBAGE

- Batteries
- Needles/Sharps

GARBAGE

LEAF & YARD WASTE (L&YW)

Extra L&YW will ONLY be collected on specific days. Check your schedule for the L&YW symbol.

- ACCEPTABLE ITEMS
- Leaves
- Branches
- House & garden plants
- Garden/hedge/tree trimmings

Individual branches must be no more than 2" (5 cm) in diameter or 4 ft (1.2 m) in length. Bundled branches must be no more than 2 ft (0.60 m) in diameter. Individual bag/bundle/container cannot exceed 50 lbs (23 kgs).

Use open top, reusable containers, cardboard boxes, or paper yard waste bags.

Material in plastic bags will not be collected. L&YW is collected separately from other materials. Green carts will only be collected on green cart collection days.

Leaves & Grass Clippings (loose or in paper bags) accepted at OVWRC, no charge. Fees apply for Mixed Leaf & Yard Waste, Branches, Tree Limbs and Stumps.

LEAF & YARD WASTE

Paper recycling must be placed loose in a blue box, cardboard box, paper bag or other reusable open top container.

Residential recycling in plastic bags WILL NOT be collected (with the exception of shredded paper).



This side for Paper

BLUE BOX (Paper & Cardboard)

To absorb moisture, reduce odours and help keep material from freezing to the cart, place crumpled newspaper at the bottom of your cart or layer dry leaf & yard waste over wet food waste or use a leaf & yard waste bag to line your cart. Material can be wrapped in newspaper, paper bags or other compostable box (i.e. cereal, frozen food, etc.).



FOOD-SOILED PAPER

- Coffee grounds & filters
- Drink trays & paper egg cartons
- Facial tissues & paper towels
- Microwave popcorn bags
- Muffin liners
- Paper plates & napkins
- Paper coffee & cold drink cups (plastic lids & straws removed & discard with garbage)
- Paper take-out containers
- Pizza boxes
- Tea bags
- Waxed & brown butcher paper



YARD & PLANT WASTE

- Leaves
- Twigs (less than 1" (2.5 cm) in diameter, no longer than 3 ft (0.91 m), DO NOT bundle)
- House plants & soil
- Grass clippings
- Weeds & yard trimmings

DO NOT PLACE THESE ITEMS IN GREEN CART

- Plastics of any kind (including plastic bags claiming to be biodegradable or compostable)
- Plastic wrap
- Diapers
- Kitty litter
- Pet waste
- Plastic & glass containers
- Ashes
- Dryer lint

When placed out for collection the green cart lid must be closed with wheels facing away from the road.



GREEN CART (Food Waste)